

COMPANY PROFILE



BOSS INDUSTRIAL & OFFICE EQUIPMENTS

We are an authorized Business partner of Zebra Technologies



Warehouse / DC / Back of Store

MOBILE COMPUTERS TC8300 TC73 TC22/TC27 MC9400 MC9300 MC2200 MC3300 Series MC20	RFID READERS AND TAGS MC3300xR RFD90 FX9600
RUGGED TABLETS ET80/ET85 ET60/ET65 L10/L10x XSLATE L10/L10x XPAD	
WEARABLES W550 RFD W550 RS5100 WT6300 RS6100	MOBILE PRINTERS ZQ600 Plus Series ZQ500 Series ZBR2100/ZBR4100
INDUSTRIAL PRINTERS ZE500 Series ZT600 Series ZT510 ZT600 Series ZT200 Series ZT111	
FIXED INDUSTRIAL SCANNERS AND MACHINE VISION SYSTEMS Fixed Industrial Scanners Smart Sensors and Cameras Frame Grabbers Vision Controllers I/O Cards 3D Sensors Machine Vision Cameras	ENVIRONMENTAL SENSORS Ze-On-demand Printable Indicators Ready-To-Use Indicators Electronic Sensors
DESKTOP PRINTERS ZD621 ZD421 ZD200 Series	VEHICLE-MOUNT COMPUTERS VC8300 Series
ROBOTICS AUTOMATION: FETCH 100 Flex Series Shelf Connect Roller Research OEM Base	BARCODE SCANNERS 3600 Series
SOLUTIONS <ul style="list-style-type: none"> • MotionWorks • Workload Communication • VisibilityIQ Foresight • Intelligent Cabinets • Workstation Connect • Zebra Dimensioning • Symmetry • Zebra OneCare 	

Note: Product appearance is subject to change

Managing Director's Message

From a humble beginning in 2017, BIOE has transformed today into one of the most robust enterprise in technology and business system and solution provider. We have reached milestones along the way yet we continue our journey with the humbleness and aspirations we started with. The gradual transformation of BIOE from an enterprise hardware supplier to an enterprise solution provider has simply been fast paced and amazing.

We started with one product and one brand and today BIOE is a company, having over 40 well trained professional and a nationwide network . Our partnership framework is built on over 08 SI partnerships and authorized resellers associations of world's leading IT hardware manufacturers and system integrators like Zebra, Toshiba, Trendnet, and Cambium Networks are currently our strategic business partners.

"Become a leading Business Systems and Solutions provider in the field of information and communication technology" - is the vision of BIOE. Based on its core commitments - service excellence and customer satisfaction - along with international recognitions from its partners, BIOE continues to grow in expertise, technical capability and service.

We at BIOE are proud to have such differentiating products and solutions in our lineup that can take enterprise and system automation to a whole new level. Customer satisfaction has always been our utmost priority. We are committed to understand the need of the customer and evolve with the time and trends of necessity and innovation. With our products, solutions and services lineup enriched than ever before, I believe this is the beginning only with future successes visible in the distant horizon.

I would like to appreciate and acknowledge to our loyal customers for their continued support. Our gratitude and appreciation also goes to our international renowned principals who have not only been providing us quality products but also providing us unfailing support and knowledge sharing to meet the requirement of customers. We have reached a pinnacle of our earlier aspiration and transiting to start another one. Our journey for continued excellence stays unabated.

Ariful Islam
Managing Director

About Us

Boss Industrial & Office Equipment's (BIOE) is one of the leading information and communication echnology companies in Bangladesh. Since its inception in 2017, it is working with a mission to meeting the consumer needs in distributing high quality products through maintaining a high level of customer satisfaction. BIOE recently celebrated its 08th years of glorious success as a reliable distributor and supplier of office automation products and technology solutions to the corporate sector of Bangladesh.

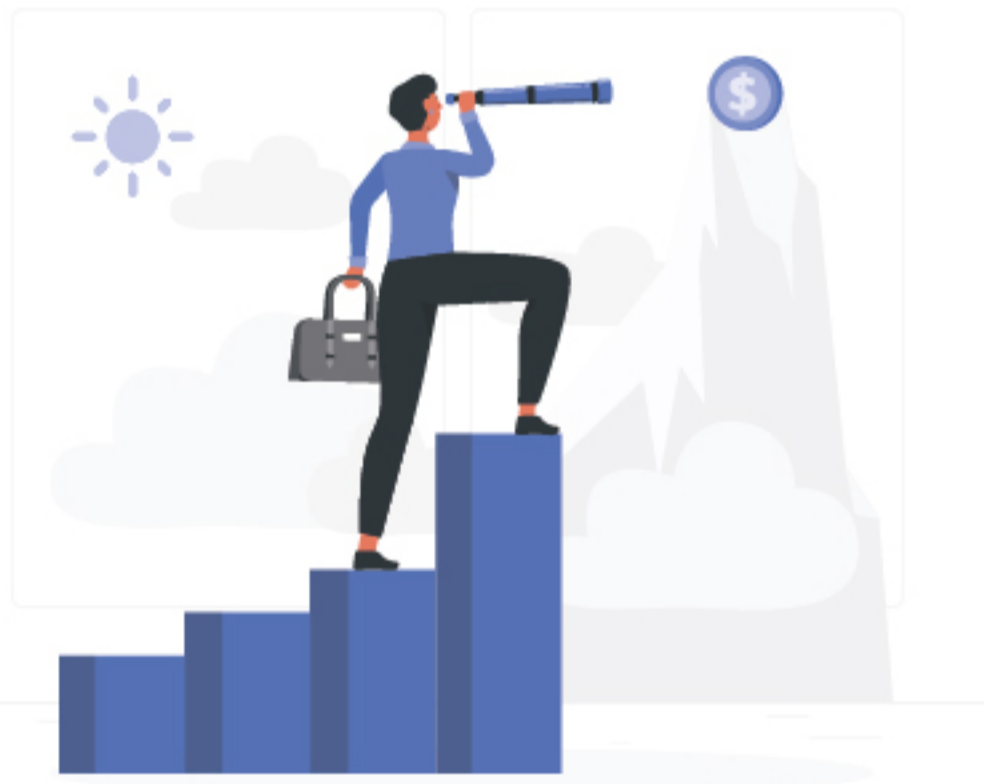
Pairing up with global technology leaders like Zebra, Toshiba, Trendnet, Cambium. BIOE has moved forward with absolute focus on understanding the market needs, catering the consumer with up-to-date technology, and providing with all kinds of service support the buyer requires. BIOE proudly presents a diversified and state-of art product lineup, which includes full color digital Barcode Printer, Barcode Scanner, Mobile Computer, ID Card Printer, RFID Device, Multifunction System, Switch, Router, Networking Device Software Solutions and Turnstile Gate, fence. The expert team of professionals and Zebra certified engineers ensure uncompromised customer service at both pre sales and post sales periods.

Our distinguished clients include reputed companies from the Embassy, Pharmaceutical, FMCG, Financial, Healthcare, Textiles, Garments, MNC and Transportation sector etc. As BIOE celebrates the passage of time in maintaining global standards, it aspires to make new revelations in business communication technology by raising the barrier even further, and setting new standard for others to follow. BIOE carries the laurels of yesterday to achieve greater accomplishments, as it celebrates the passage of time in maintaining global standards and continues to grow even further.



Our Vision

At Boss Industrial & Office Equipment's, our mission is to revolutionize business operations in Bangladesh by delivering state-of-the-art barcode printers, label printers, and warehouse management solutions. As the authorized Business Partner of Zebra Technologies, we are dedicated to providing innovative products, tailored solutions, and unparalleled support that empower businesses to achieve efficiency, accuracy, and growth in an increasingly competitive market.



Our Mision

Our vision is to be the foremost leader in industrial and office equipment solutions in Bangladesh, setting the benchmark for excellence in the industry. We aspire to become the trusted partner for businesses of all sizes by offering advanced technologies, expert consultation, and reliable services. Through innovation, sustainability, and a customer-centric approach, we aim to shape the future of warehouse management and business automation, helping our clients stay ahead in a rapidly evolving digital landscape.



Our Services

- | Pharmaceuticals Shipper Carton Label Solutions
- | Retail Technology Solutions
- | Transportation and Logistics Solutions
- | Manufacturing plant Solutions
- | Warehouse and Distribution
- | Hospitality
- | Field Operations
- | Mobile Technology for Energy and Utilities
- | Healthcare Technology Solutions



Our Products

DESKTOP LABEL PRINTER

Model: ZD-230

Brand: Zebra

Print Methods: Thermal Transfer & Direct Thermal
Resolution: 203 dpi/8 dots per mm
Print Width: 4.09"/ 104mm
Print Length: 39"/991mm
Print Speed: 6"/152 mm Per Sec
USB 2.0, 12MB Flash Memory, 12MB SD RAM



Model: ZD-421

Brand: Zebra

Print Methods:
Thermal Transfer & Direct Thermal
Resolution: 203 dpi/8 dots per mm,
300 dpi/12 dots per mm
Print Width: 4.09"/ 104mm,
Print Length: 39"/991mm
Print Speed: 6"/152 mm Per Sec (203),
4"/102 mm Per Sec (300)
USB 2.0/USB Host, 512MB Flash
Memory, 256MB SD RAM



Model: ZD-621

Brand: Zebra

Print Methods: Thermal Transfer
& Direct Thermal
Resolution: 203 dpi/8 dots per mm,
300 dpi/12 dots per mm
Print Width: 4.09"/ 104mm,
Print Length: 39"/991mm
Print Speed: 8"/203 mm Per Sec (203),
6"/152 mm Per Sec (300)
USB 2.0/USB Host,
512MB Flash Memory, 256MB SD RAM



INDUSTRIAL LABEL PRINTER

Brand: Zebra

Model: ZT-231

Print Methods:
Thermal Transfer and Direct Thermal
Resolution: 203 dpi/8 dots per mm, 300 dpi /
12 dots per mm
Print Width: 4.09"/ 104mm;
Print Length: 157"/3988mm
Print Speed: 6"/152 mm per sec
128MB SD RAM, 128MB Flash.
USB 2.0 and RS-232 Serial Ports



Model: ZT-411

Brand: Zebra

Print Methods: Thermal Transfer
& Direct Thermal
Resolution: 203 dpi/8 dots per mm,
300 dpi/12 dots per mm
Print Width: 4.09"/ 104mm,
Print Length: 157"/3988 mm (203),
73"/1857 mm (300)
Print Speed: 14"/356 mm Per Sec (203),
10"/254 mm Per Sec (300)
USB 2.0/ Dual USB Host,
512MB Flash Memory, 256MB SD RAM
Serial, 10/100 Ethernet, Bluetooth 4.1



Model: ZT-421

Brand: Zebra

Print Methods: Thermal Transfer
& Direct Thermal
Resolution: 203 dpi/8 dots per mm,
300 dpi/12 dots per mm
Print Width: 6.6"/ 168 mm,
Print Length: 102"/2591 mm (203),
45"/1143 mm (300)
Print Speed: 12"/305 mm Per Sec (203),
10"/254 mm Per Sec (300)
USB 2.0/Dual USB Host,
512MB Flash Memory, 256MB SD RAM
Serial, 10/100 Ethernet, Bluetooth 4.1



Brand: Zebra

Model: ZT-510 (upgraded 105SL+)

Print Methods:
Thermal Transfer and Direct Thermal
Resolution: 203 dpi/8 dots per mm,
300 dpi/ 12 dots per mm
Print Width: 4.09"/ 104mm
Print Length: 150"/ 3810 mm (203dpi)
100"/2540mm (300dpi)
Print Speed: 12"/ 305mm per sec.
512MB RAM, 2 GB non-board linear, Flash
USB Serial, 10/100 Ethernet/Bluetooth



Our Products

Model: ZT-610 (upgraded 110xi4)

Brand: Zebra

Print Methods:

Thermal Transfer and Direct Thermal
Resolution: 203 dpi/8 dots per mm, 300 dpi/
12 dots per mm
Print Wide: 4.09"/ 104 mm;
Print Length: 150"/ 3810mm (203dpi)/
130"/3302mm, 300dpi;
print speed: 14 dots per sec
1 GB RAM, 2GM on Board linear flash
USB, Serial, 10/100 Ethernet/ Bluetooth
STRONG, SMART AND
SCALABLE RFID ENGODING



Model: ZT-620 (upgraded 170xi4)

Brand: Zebra

Print Methods:

Thermal Transfer and Direct Thermal
Resolution: 203 dpi/8 dots per mm, 300 dpi/
12 dots per mm
Print Wide: 6.6"/ 168 mm;
Print Length: 150"/ 3810mm (203dpi)/
100"/2540mm, 300dpi;
print speed: 12 dots per sec
1 GB RAM, 2GM on Board linear flash
USB, Serial, 10/100 Ethernet/ Bluetooth
STRONG, SMART AND
SCALABLE RFID ENGODING



Model: 220Xi4

Brand: Zebra

Print Methods: Thermal Transfer & Direct Thermal

Resolution: 203 dpi/8 dots per mm, 300 dpi/
12 dots per mm
Print Width: 8.5"/ 216 mm, (A4)
Print Length: 39"/991 mm (203)
Print Speed: 10"/254 mm Per Sec (203), 6"/
152 mm Per Sec (300)
256MB Flash (Standard) Memory, 128MB RAM
USB, 10/100 Ethernet, Serial and Parallel Ports.



Full range of fasson / DT/TT Barcode label,
Wax, wax/resin, resin original zebra ribbon
All kinds of spare parts including printer head,
power supply, mother board, belt, interface board etc



WRISTBAND PRINTER USE FOR HOSPITAL

Model: ZD-510 HC

Brand: Zebra

Print Methods: Direct Thermal

Resolution: 300 dpi/12 dots per mm
Print Width: (0.75"/ 19.05 mm),
(1"/25.4 mm), (1.1875"/30.16 mm)
Print Length: 22"/558 mm (300)
Print Speed: Healthcare: 2"/51 mm Per Sec,
Z-Band Fun & Splash: 4"/102 mm Per Sec
USB 2.0/Dual USB Host,
512MB Flash Memory, 256MB SD RAM
Serial, 10/100 Ethernet, Bluetooth 4.1



Model: ZD-411 HC

Brand: Zebra

Print Methods: Direct Thermal

Resolution: 203 dpi/8 dots per mm
300 dpi/12 dots per mm (optional)
Print Width: 2.2 in./56 mm for 203 dpi
2.13 in./54 mm for 300 dpi
Print Length: Maximum: 39.0 in./991 mm
Print Speed: 6 in./152 mm per second (203 dpi)
4 in./102 mm per second (300 dpi)
USB 2.0/Dual USB Host,
512 MB Flash; 256MB DDR3 SDRAM
Printer setup mobile app for Android and iOS via BLE
(Bluetooth Low Energy 5) connection*



Our Products

ZEBRA CARD PRINTER

Model: ZXP-7
Brand: Zebra

300dpi (11.8 dots/mm) Print resolution
 USB 2.0 and Ethernet 10/100 connectivity
 Microsoft(R) Certified Windows(R) drivers
 200-card capacity feeder (30ml)
 100-card output hopper (30ml)
 Ix Series Intelligent media technology
 21-character x 6 line LCD operator display with- configurabel soft keys
 Kensington physical lock soft
 Single & Dual sided Printing
 Near photographic Print quality
 Edge to edge printing on standard CR-80 media
 Simultaneous printing, encoding, and lamination
 One pass single and dual sided wasteless lamination


Model: ZC300
Brand: Zebra

Single sided Color/ Mono Print or Dual Sided Printing
 300dpi (11.8 dots/mm) Print resolution
 Auto calibration of ribbon
 USB 2.0 and Ethernet 10/100 connectivity
 100 card capacity auto-adjusting input hopper (30ml)
 100 card capacity output hopper (30ml)
 Manual card feeding capability with LED bezel, Graphical color LCD
 3 Tricolor Printer status indicator lights, Kensington Secure lock slot
 Print touch NFC tag for online printer help
 And Documentation access
 Printer host authentication, Data encryption
 Edge to edge printing on standard CR-80 media
 Dry-Sublimation thermal transfer direct to-card print method
 200 card/hour single-slided YMCKO
 140 card/hour dual-sided YMCKO
 900 card/hour single sided monochrome
 450 card/hour dual sided monochrome


Model: ZXP-9
Brand: Zebra

Single side and dual side printing
 300dpi (12.0 dots /mm) Print resolution
 21-character x 6 line LCD operator display
 USB and Ethernet connectivity
 Auto-calibration of media
 Laminator-single and dual-sided
 150 card capacity feeder (30 ml)
 100 card capacity outpur hopper (30 ml)


Model: ZC10L
Brand: Zebra

Direct to card-dry diffusion
 Full color or monochrome printing
 Edge-to edge printing
 Single- sided Printing
 300dpi print resolution
 USB Connectivity
 Card size 5.5" x 3.46"



Original accessories ribbon, PVC card, RFID Card
 Card cleaning kit & Parts



BARCODE/RFID SCANNER/READER

LS 2208

Single Line Laser
 100 Scan/ Sec
 Auto/Manual/Tigger


LI 4278

Bluetooth Barcode Scanner
 1D Scanning, Range 100 Meter
 USB Interface


DS 2208

1D/2D Scanning,
 Range: 10 Meter
 Auto/ Manual Mode


DS 2278

1D/2D Scanning,
 Bluetooth
 Range: 10 Meter
 Auto/ Manual Mode



Our Products

DS 9308

2D & QR Code Reader
Imager, Speed up to 90 in
/2.3 per sec. USB Interface



DS 9908

1D/2D Presentation Image.
With Stand, Auto/ Manual Tigger



MP 7000

1D/2D bioptic imager
Solid State Technology
Datamatrix: Micro PDF417.
Micro QR Code, PDF417, QR Code
12VDC from POS Interface Cable
Up to 100 in/sec



DS 7708

1D/2D/PDF
Auto Scanning
Scanner with Table, Mount Kit
Large Scan Windows
Large Scan Windows
Up to 100 in/sec



DS 3678

Ultra Rugged Scanner
Bluetooth, 100 Meter
Flexible Superior Capture
1D/2D barcode, photos, signatures
OCR



CS 4070

Flexible Mobile
1D/2D Barcode scanner
Long batter life
durability: 4 ft. / 1.2m dorp
OCR



MOBILE COMPUTER/ PORTABLE DATA TERMINAL

MC2180

Brand: Zebra
Windows CE OS
1D/2D, 256MB RAM/ROM
Touch Color Display, USB, WIFI
2400mAh Battery, IP54 rating



MC36

Brand: Zebra
Mobile Computer
1D/2D, Color Display, Android 1.3GHz
1GB RAM/8GB ROM USB, BT,
GPRS, WLAN, Micro SD Card, Driver Included



TC56

Brand: Zebra
Mobile Computer
1D/2D, Color Display
Android 7.0 Nougat
2GB RAM/ 16 GB Flash
USB, BT, GPRS, WLAN
Micro SD Card
Driver Included



MC3200

Brand: Zebra
Mobile Computer
1D/2D, Color Display
Windows Based OS
512MB RAM/ 2GB Flash
USB, BT, GPRS, WLAN, WWAN
Micro SD Card
Driver Included



MC3300

Brand: Zebra
Mobile Computer
1D/2D, Color Display
Android 7.0 Nougat
512 MB RAM, 2 GB Flash
USB, BT, GPRS, WLAN
Micro SD Card
Transflective LCD Display Durable



TC-20/25

Brand: Zebra
1D/2D Touch Screen
QCOM MSM8937(R)
64-Bit 8 Core
ARM(R) Cortex A53. 1.4GHz
512KB L2 Cache
Android Oreo 8.0



MC9200

Brand: Zebra
Android Mobile Computer
1D/2D, Color Display
BT, WLAN, Micro SD Card
12.7 cm (5 in)
Corning Gorilla Touchscreen
Volp Support



Our Products

RFID SCANNER/ READER

MC3390R

Intergrated Long Rang UHF RFID Reader
Android 7.0 (Nougat)
USB, WLAN and Bluetooth
5200mAh, Corning gorilla Glass



MC9190-Z RFID Reader

Rugged RFID Handheld Reader
USB, WLAN, Bluetooth
LCD Screen, 6ft./1.8m drop Capable



DS 9908R

Gen 2 RFID tags
1D/2D Barcodes
Images And Signatures



RFD8500

Can use with TC-20/25
RFID 1D/2D/PDF417
Mobile Barcode/ RFID



RFID FIXED READER

FX7500 Fixed RFID Readers

The FX7500 Fixed RFID Reader features advanced radio technology and a more flexible infrastructure to deliver faster, more accurate and more cost effective business



FX9500 Fixed RFID Reader

The FX9500 is an industrial class fixed RFID reader designed for high volume, high density and high throughput warehouse/ distribution Applications.



RFID READER ANTENNAS

AN200 RFID Antenna

AN200 general-purpose indoor/outdoor antenna can be used in wide range of areas for versatile and reliable coverage



AN480 RFID Antenna

This single port antenna offers maximum and is designed worldwide



PORTABLE PRINTER

Brand: Zebra

Model: EZ 320
Direct thermal
Speed up to 4" / 102mm sec
Bluetooth 2.1
203dpi, 8dots per mm



Brand: Zebra

Model: Qln 420
Direct Thermal
Speed up to 4" / 102mm sec
Bluetooth 2.1
203dpi, 8dots per mm



PERFORMANCE DESKTOP PRINTER

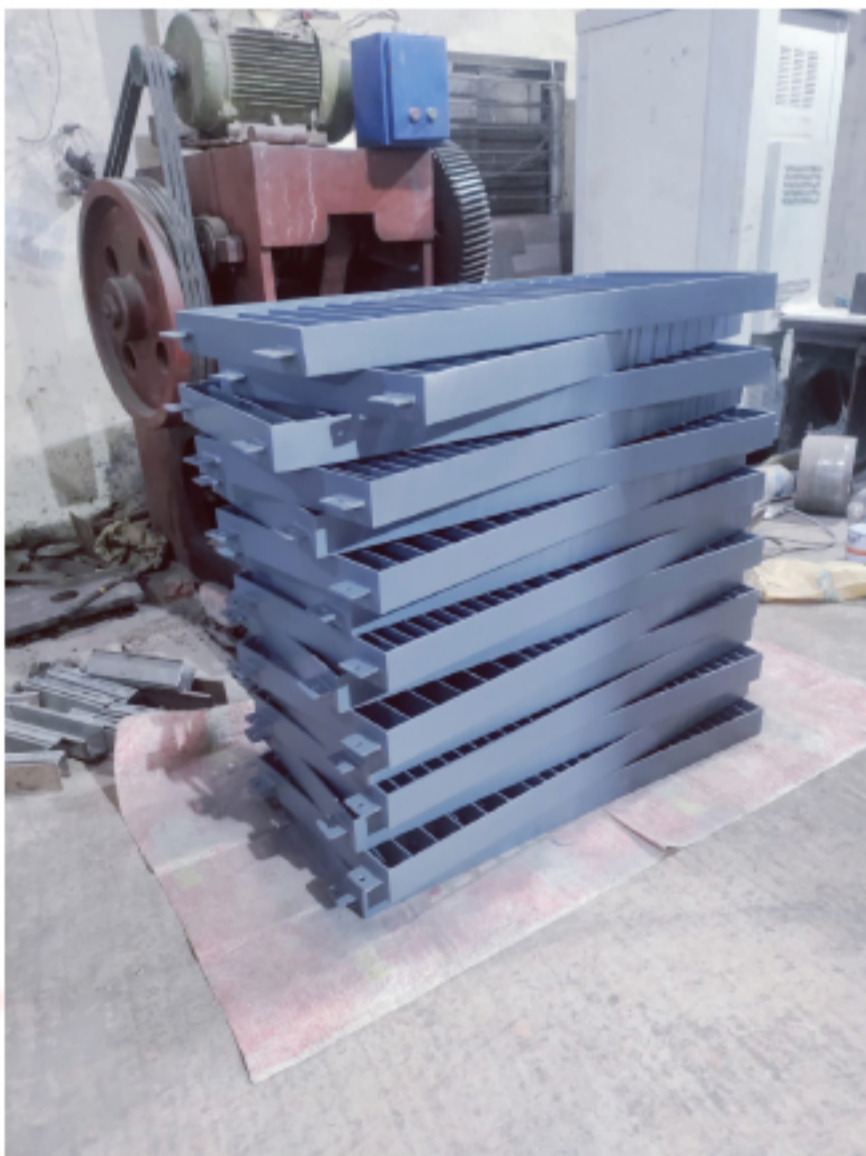
Brand: Zebra

Model: ZD-500
Thermal Transfer Printer
203dpi.4" Print wide
RFID
USB/Parallel/Ethernet Interfaces

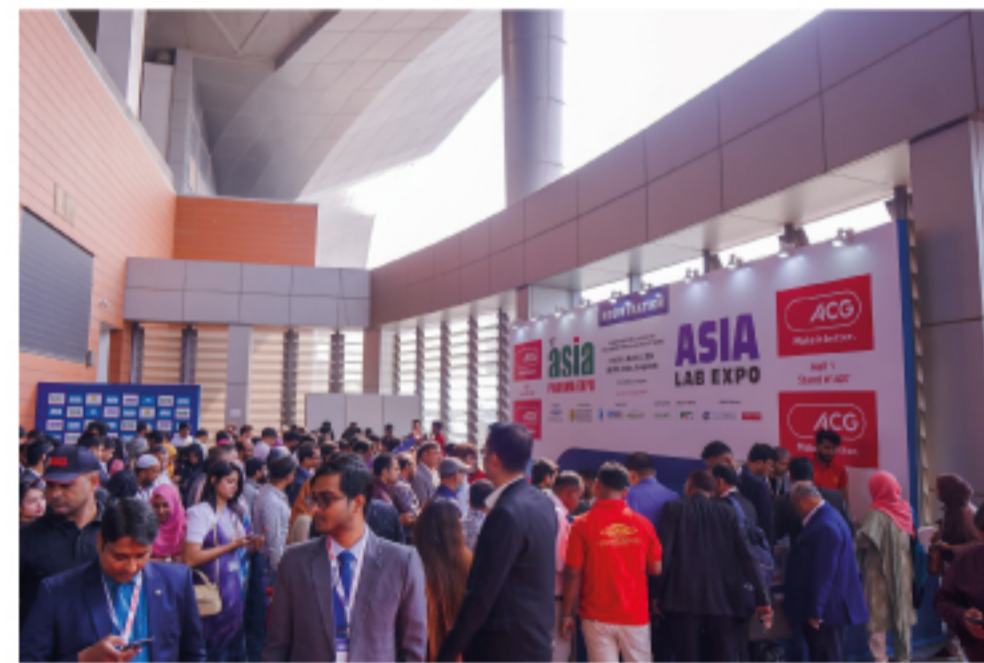


Our Successful Project

Japan Embassy Of Bangladesh



Our Achievements



Our Clients

EMBASSY OF
JAPAN
IN BANGLADESH



Opsonin
Opsonin Pharma
Ideas for healthcare



**BEXIMCO
PHARMA**



M&J
PASSION MAKES INNOVATION



PRETTY GROUP



LIZFASHION
INDUSTRY LIMITED
利德成集团



নাম্বার 1 ড্রাগ
MYONE



FairElectronics



EPYLLION
GROUP

Olympic
OLYMPIC INDUSTRIES LIMITED

SINGER
Bangladesh Limited

RADIANT
BUSINESS CONSORTIUM



BUTTERFLY
Committed to Care



Head Office: House 18, Road 02, Block B, Banasree
Rampura, Dhaka 1229, Bangladesh

Hotline: +88 01733 054345, Email: info@bioe.com.bd

Web: www.bioe.com.bd